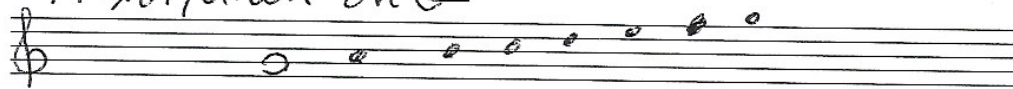


Eliyahu Schleifer

Shtetters: The Adonai Malach Mode

קדמא אדמא
 or major -
 Rosj Marjano
 begin Amide 5.
 אדמא
 ויאמר ה' אליו

Mixolydian on G



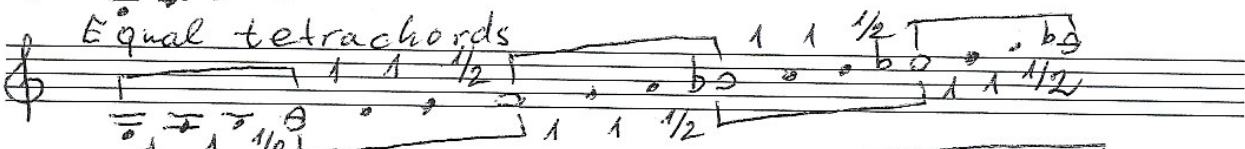
Mixolydian on C



Adonai Malach



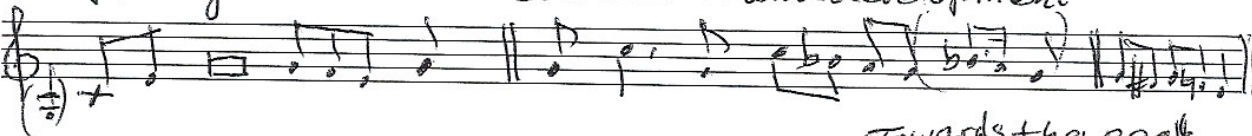
Equal tetrachords



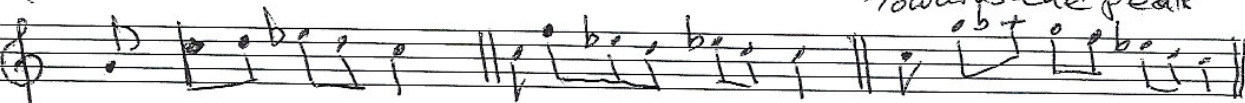
Mixolydian scales



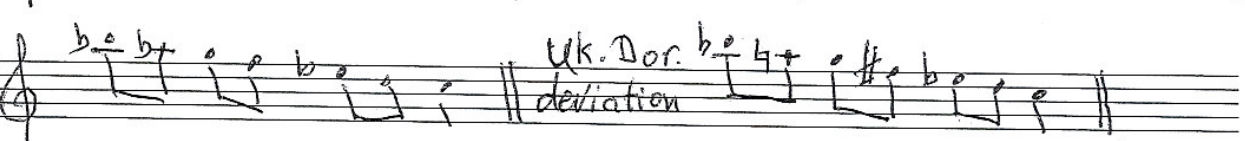
Opening



Continuation and development



Towards the peak



Uk. Dor. deviation



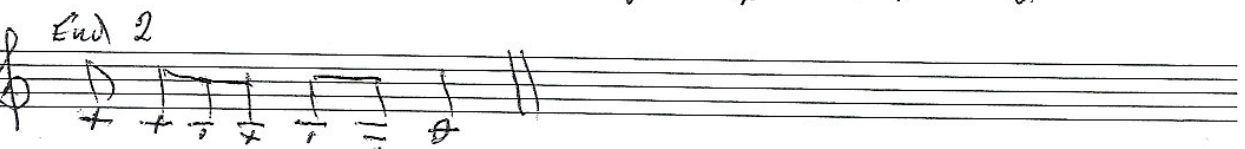
major deviation

Herald



Approaching the end

End 1



End 2

1-