

# Sjema Jisraël

zetting: Antoon Krelage

Musical score for the first system of 'Sjema Jisraël'. It consists of a vocal line and a piano accompaniment line, both in 4/4 time and B-flat major. The vocal line has lyrics: 'Sj'ma Jis - ra - ël A-do - nai È-lo-'. The piano accompaniment features a steady bass line and chords. A circled melodic phrase in the vocal line is repeated in the piano accompaniment.

Musical score for the second system of 'Sjema Jisraël'. The vocal line continues with lyrics: 'hé - noe A - do - nai è - chad.'. The piano accompaniment continues with the same accompaniment pattern. A circled melodic phrase in the vocal line is repeated in the piano accompaniment.

# Èchad Èlohénoe

RH JK ochtend

Musical score for the first system of 'Èchad Èlohénoe'. It consists of a vocal line and a piano accompaniment line, both in 4/4 time and B-flat major. The vocal line has lyrics: 'È - chad È - lo - hé - - - noe ga-'. The piano accompaniment features a steady bass line and chords. A circled melodic phrase in the vocal line is repeated in the piano accompaniment.

Musical score for the second system of 'Èchad Èlohénoe'. The vocal line continues with lyrics: 'dol A - do - né - noe ka - dosj sje - mo. ka - dosj sje - mo.'. The piano accompaniment continues with the same accompaniment pattern. A circled melodic phrase in the vocal line is repeated in the piano accompaniment.

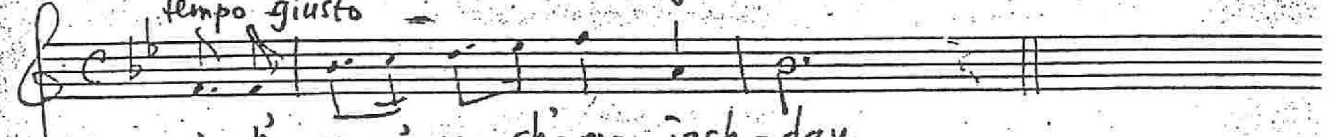
ad libitum

Joppe Poolman



Gad-d' - lu la - do - naj i - ti

tempo giusto



u' - h' - ro - m' - ma sh' - mo jach - dav